

OLDE FIELD PRESERVE

Directions:

- * From Route 82, take Mt. Parnassus Road east about 2 miles.
- * Take a right onto Parker Road (aka Peter's Path).
- * The preserve is about 3/4 mile south of Mt. Parnassus Road on the left side of Parker Road where a trailhead sign marks the property.

NOTE: Parking is very limited as Parker Road is narrow and turning around could be challenging.

Trail Facts:

- ◇ The .3 mile blue trail leads out to an old field and loops back to the entrance.

Permitted Activities:

- ◆ Hiking
- ◆ Nature study
- ◆ Snow shoeing
- ◆ Cross-country skiing
- ◆ Mountain biking
- ◆ Horseback riding
- ◆ Birding

No motorized vehicles are allowed on the property.

For more information or to report any problems during your visit , see:
www.ehlt.org

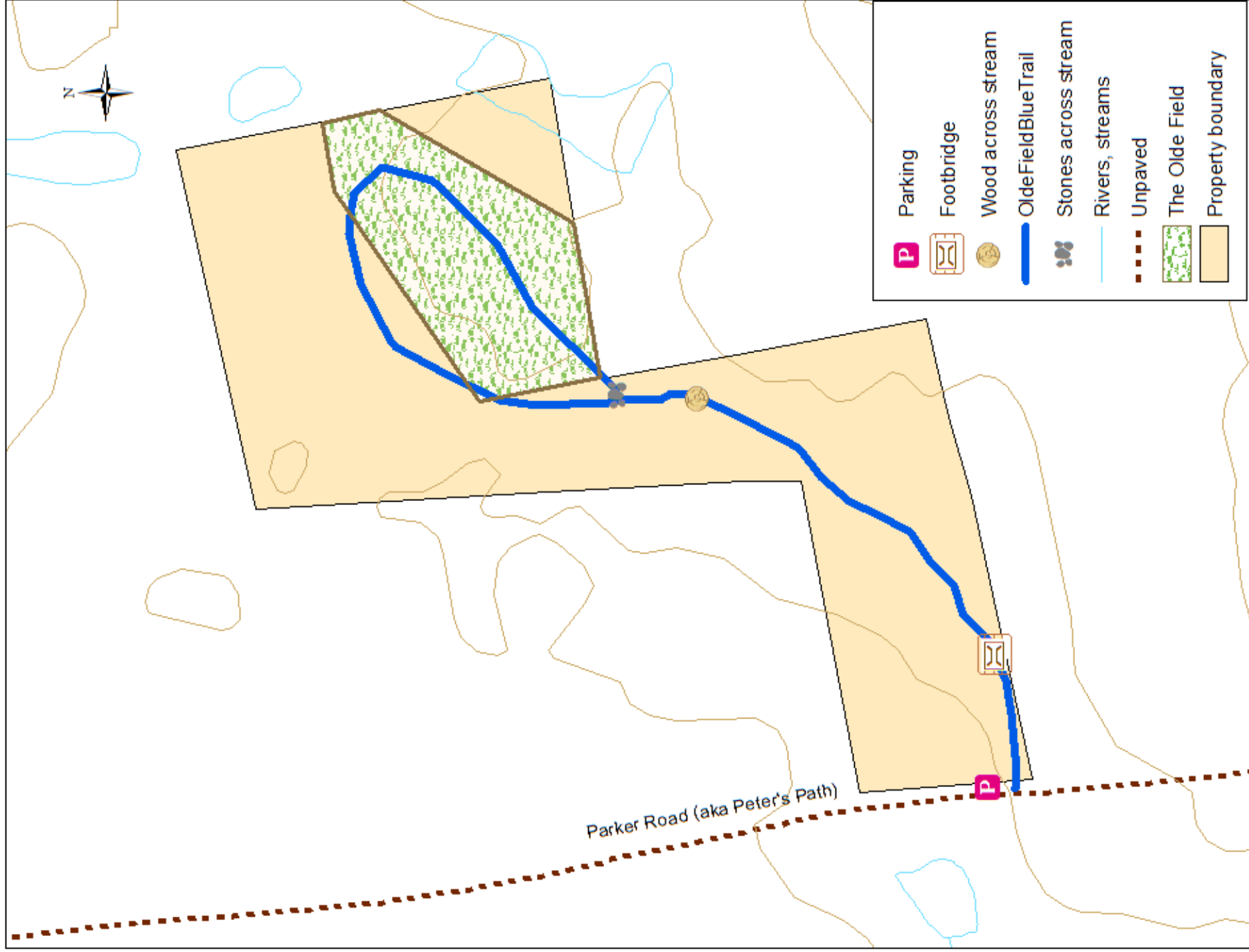
EAST HADDAM TRAILS

OLDE FIELD PRESERVE

The 10-acre Olde Field Preserve is a terrific site for vegetation education as it contains over 100 species of trees, shrubs and herbaceous plants, including Dwarf Ginseng, Mad Dog Skullcap, Hog Peanut and Enchanter's Nightshade. There are bluebird-nesting boxes at various locations. The interior land was given to the East Haddam Land Trust because it also is a great place to find wildlife.



OLDE FIELD PRESERVE



Managed by **EAST HADDAM LAND TRUST**